



📍 21 Station Road, Corsham, Wiltshire, SN13 9EY

🔗 Offers In Excess Of £350,000

Located only a short level walk from the High Street is this mature 3-bedroom semi-detached family home that needs updating but offers loads of potential and is brought to the market with No Onward Chain

- **\*\* Open House 30th May by Appointment Only \*\***
- Mature 3 Bedroom Semi Detached House
- Sought After Location Level Walk of High Street
- Large Enclosed Rear Garden & Parking to Front
- In Need of Updating Throughtout
- Scope to Extend & Improve Subject To Planning
- Two Reception Rooms with Gas central Heating
- No Onward Chain

🏠 Freehold

📊 EPC Rating D



\*\*\* Open House By Appointment only on 30th May \*\*\*  
Strakers are delighted to have the opportunity of taking to the market this mature 3-bedroom semi-detached family home that needs updating, but offers loads of potential and is located only a short level stroll from the High Street in this sought-after location close to the Cricket pitch, being the very heart of this popular market town. Having been owned by the same family for many years, the house sits on a generous-sized plot with a wonderful, large garden to the rear and hard-standing parking to the front. The living accommodation comprises an entrance hall, a living room to the front with a separate dining room to the rear, along with a galley kitchen. On the first floor, there are two double bedrooms and one single bedroom, along with the family bathroom. The property offers huge potential to extend and improve, subject to planning, and is brought to the market with No Onward Chain.

### Situation

Corsham is a pretty and historic town of architectural significance located on the southern fringes of the Cotswolds, an area of outstanding natural beauty and some 8 miles North East of the fine Georgian City of Bath. The town, noted for its fine High Street, has a wealth of beautiful and historic buildings dating from the 16th Century such as the Alms House and the historic Corsham Court with its landscaped open parkland. The town caters for most day to day needs with a range of national and bespoke shops, coffee houses, boutiques, restaurants and a variety of public houses. There are very good Primary and Secondary schools and the new Corsham Leisure Centre. Communications are excellent: Bath, Bristol and Swindon are all within easy motoring distance; there are fast road links to London and the West Country via the M4 motorway (J17 and 18 approximately 15 - 20 minutes away); and main line rail services are available from either Bath or Chippenham to Bristol Temple Meads and London Paddington.

### Property Information

Main Services

Gas Central Heating

Freehold Property

Council Tax Band: C

EPC Rating: D

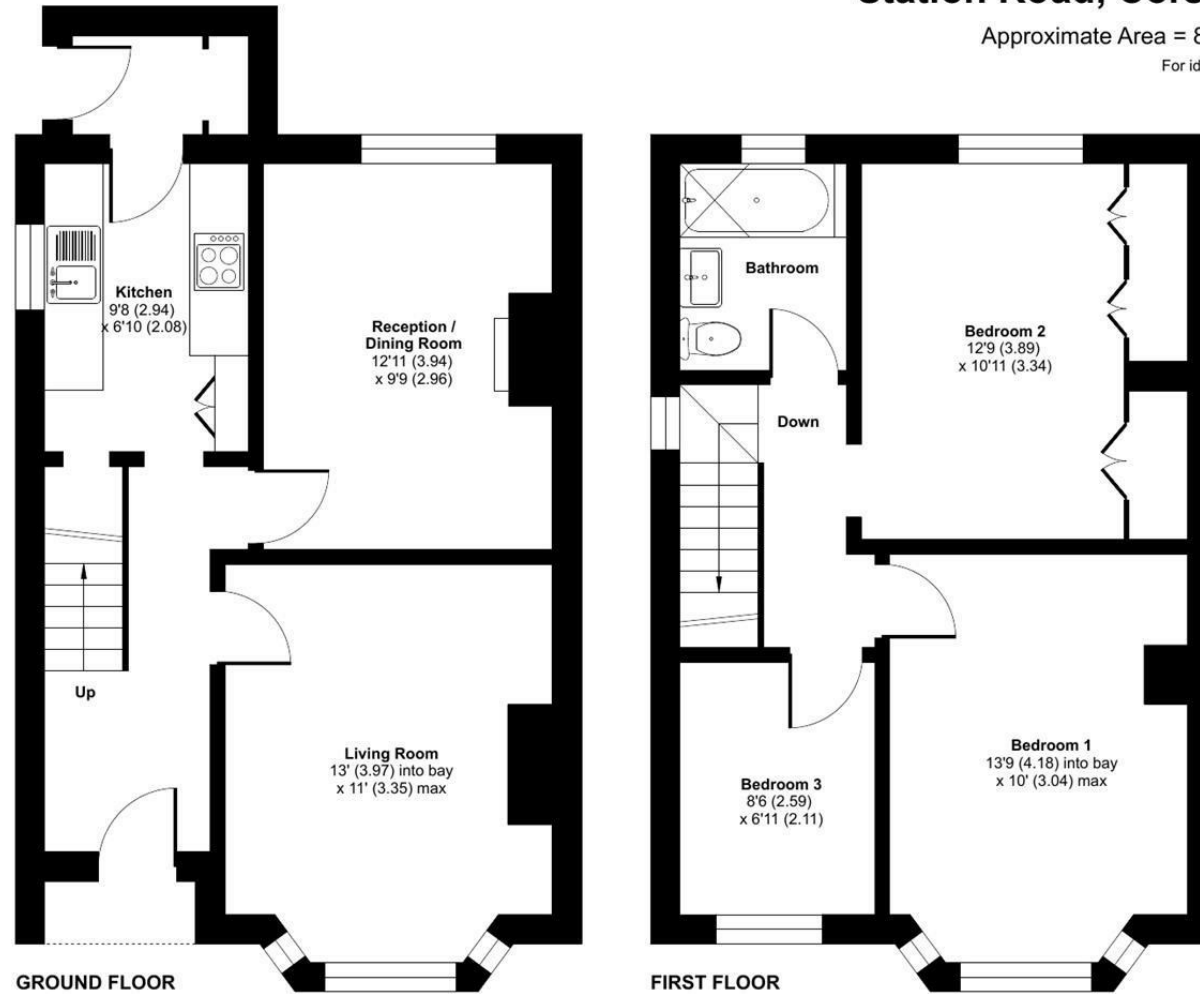
No Onward Chain



# Station Road, Corsham, SN13

Approximate Area = 889 sq ft / 82.5 sq m

For identification only - Not to scale



Floor plan produced in accordance with RICS Property Measurement 2nd Edition, Incorporating International Property Measurement Standards (IPMS2 Residential). © ntechcom 2026. Produced for Strakers. REF: 1455590

Disclaimer These particulars, whilst believed to be accurate are set out as a general outline only for guidance and do not constitute any part of an offer or contract. Intending purchasers should not rely on them as statements of representation of fact, but must satisfy themselves by inspection or otherwise as to their accuracy. No person in this firm's employment has the authority to make or give any representation or warranty in respect of the property. All measurements and distances are approximate only. Your home is at risk if you do not keep up repayments on a mortgage or other loan secured on it.